

Strong Energy Efficiency

- Reduce conductive, convective and radiant heat transfer
- Best-in-class long term R-value performance
- Continuous insulation to reduce heat loss through framing
- ISO RED provides thermal, air and vapor control layers to help keep conditioned spaces comfortable

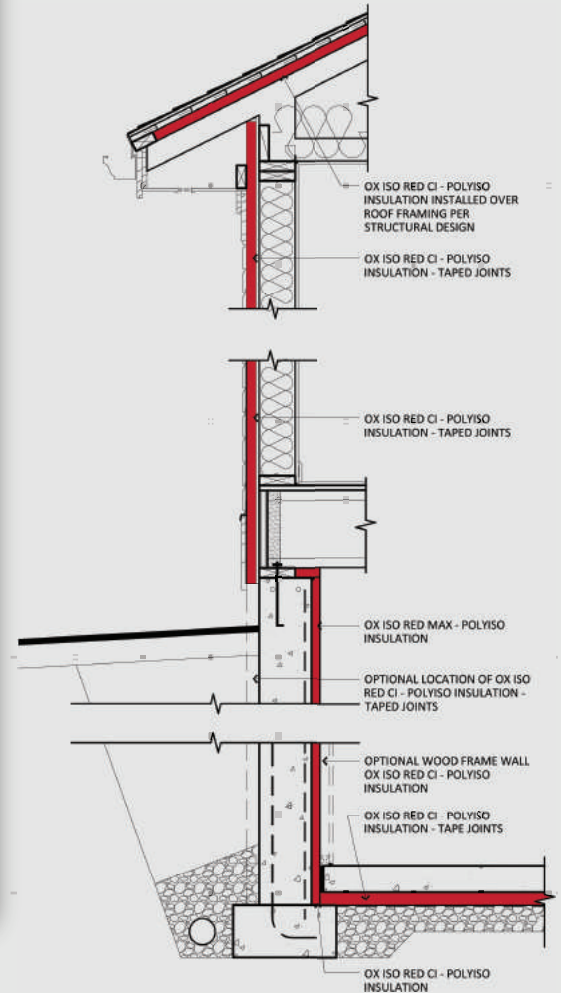
Strong Water Resistance

- Closed cell foams not only provide higher R-values, but superior moisture resistance
- Water-resistant facers provide first-line moisture protection
- Resilient facer technology with closed cell foam core allows for a code compliant, weather-resistant barrier
- Closed cell polyiso foam provides superior fastener seal-ability that building wraps do not
- 25 psi compressive strength equates to 3600 psf soil pressure

Strong Sustainability

- Manufacture of ISO RED results in significantly lower Global Warming Potential (GWP) than other Polystyrene insulation.
- Can lower the consumption of fossil fuels

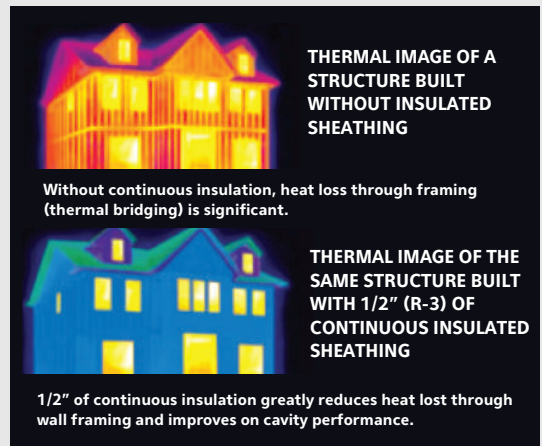
Typical Application



FASTENER METHODS

Application	Stud Spacing	Attachment Method	Fastener Spacing (1)
Wood Framing	16" or 24"	Capped nails, staples or roofing nails (-1" framing embedment)	12" perimeter 12" field Fastener heads flush with surface
Metal framing	16" or 24"	Corrosion-resistant self-tapping screws with 1" diameter cap or washer. (1/4" framing embedment)	12" perimeter 12" field Fastener heads flush with surface
Interior Masonry or concrete	N/A	Suitable construction adhesive or masonry fasteners with 1" diameter cap or washer or combination of adhesive & mechanical fasteners. (-1" embedment into substrate)	Adhesive beads spaced 16" horizontally or full perimeter. Mechanical fasteners 12" perimeter and 12" field spaced 16" horizontally or combination of adhesive and minimum fasteners to hold until adhesive sets
Exterior Masonry or concrete below grade	N/A	Granular water-draining fill	Only as required to ensure intimate contact to masonry surface or water proofed surface

1) Refer to project engineer for potential fastener spacing variation



ISO RED CI

Technical Specifications Sheet



Physical Properties of ISO RED CI Polyiso Sheathings								
ASTM Method	D1621	C209	E96	D2126 ⁽¹⁾	D2126		E84 ⁽³⁾	
	Minimum Comprehensive Strength, psi	Water Absorption	Water Vapor Transmission, perms	Dimensional Stability % Change	Nominal Density, pcf	Service Temperature Range, F	Flame Spread	Smoke (2) Developed
ISO RED CI Type 1 class 1	25	<0.06	<0.3	<0.4	2.0	-50 to +250	≤75	≤450

(1) -40 and 200 degrees F, ambient RH, length & width (2) Fire Performance/Surface Burn Characteristics (3) Proprietary polyiso rigid board facers on both sides

Thermal R-Values ⁽¹⁾					
"R" means resistance to heat flow. The higher the R-value, the greater the insulating value.					
Thickness	0.50	0.75	1.00	1.55	2.00
Thermal R-Value	3.3	5.0	6.5	10.0	13.0
System R-Value ⁽²⁾	6.1	7.8	9.3	13.6	15.8

(1) Thermal values are determined by using ASTM C518 test method at 75 degrees mean temperature.

(2) System R-value refers to additional effective R-value possible due to emissivity performance of reflective surface. According to ASHRAE, the reflective foil facing of ISO RED MAX and ISO RED CI qualifies to add R-value to a properly detailed assembly, which includes an adjacent, 3/4" dead air space.

Poly ISO Grades & Available Facers			
Grade	Front Facer	Back Facer	Seam Finish
ISO RED CI (E84: Class B)	3-ply P/K/F	3-ply F/K/F	3M™ 8087CW 2 1/2" minimum width
ISO RED CI FF (E84: Class B)	2-ply F/K	2-ply F/K	Venture (1520-CW) 3" minimum width
ISO RED MAX (E84: Class A) Approved for exposed installations	0.9 mil foil	0.9 mil foil	Venture (1520-CW) 3" minimum width

F=Foil
K=Kraft
P=Poly

For water-resistive barrier installations, tape all seams with minimum 2 1/2" wide sheathing tape 3M™ 8087CW or equivalent. 4" wide self-adhered flashing tape meeting AAMA 711 (3M™ 8067 All Weather Flashing Tape or equivalent) with release liner may be required for effectively taping of inside and outside corners.

Flash all openings and penetrations with self-adhered flashing tape meeting AAMA 711 (3M™ 8067 All Weather Flashing Tape or equivalent). For installation instructions see: <http://www.drjbestpractices.org/installation-guide/2015/jun/installation-instructions-windows-over-fpis>

Storage
Normal care should be taken to avoid excessive moisture exposure (soaking) to unpackaged product. Maintain packaging protection until installation. Once removed from the protective bundle covering and installed on the wall frame, ISO RED can remain installed exposed to elements.

Availability
Standard width 48". Standard lengths 96", 108", 120", custom lengths available.
Contact your local OX rep or building supply partner for availability and pricing.
Visit www.oxengineeredproducts.com or call 800-345-8881

Notice: Customer is responsible for complying with all applicable laws, regulations, and building codes (collectively, "Laws") of the location where any products (individually, "Product" and collectively, "Products") manufactured by Ox Engineered Products, LLC ("Ox") are actually used, specifically including, but not limited to, Laws regarding use and disposal of the Products by Customer. Ox expressly disclaims all liability for the Products other than as expressly provided in the applicable warranty for the Product (the "Product Warranty") which is available from Ox at the address below. OX EXPRESSLY DISCLAIMS ANY OTHER WARRANTY EXPRESS OR IMPLIED INCLUDING SPECIFICALLY, BUT NOT LIMITED TO, ANY WARRANTY OF MERCHANTABILITY OR FITNESS FOR A PARTICULAR PURPOSE. None of the information contained in this brochure shall act as a waiver of any patent, trademark, copyright or other intellectual property right of Ox, nor shall any such information expand any rights or remedies set forth in the applicable Product Warranty. Ox shall not be liable for compliance of the Products with any test results obtained by third parties that may be included in this brochure. Actual results may vary. Not all Products are approved for use in all jurisdictions. The Products are not load bearing. Do not attempt to walk on them. Some Ox Products are flammable. Ox disclaims liability for damages caused by incineration of the Products. By purchasing the Products, Customer irrevocably consents that any dispute arising between Ox and Customer will be determined under Michigan law without consideration of any conflicts of law analysis and that any such dispute shall be brought only in the state or federal courts serving the locality in which Ox's headquarters are then located. By purchasing the Products, Customer expressly consents to the exercise by such courts of personal and subject matter jurisdiction and venue for such purposes. Ox Engineered Products offices are located at 22260 Haggerty Road, Suite 365, Northville, Michigan 48167. Phone (800) 345-8881.