



OX Engineered Products  
22260 Haggerty Road Suite 365  
Northville, MI 48167  
p. 1.800.345.8881  
f. 248.289.9955  
oxep.com



## iso**RED**MAX<sup>®</sup>

**Take your energy efficiency to the max.**

IsoRed Max is our line of rigid polyiso insulation with multiple facer options that adds thermal insulation to commercial curtain walls or other E84 Class A polyiso applications.

Made in USA 

iso**RED**MAX<sup>®</sup>  
HD  
polyiso sheathing by **OX**

iso**RED**MAX<sup>®</sup>  
LD  
polyiso sheathing by **OX**

iso**RED**MAX<sup>®</sup>  
WF  
polyiso sheathing by **OX**

### **Energy Efficiency**

Easily add R-value and eliminate insulation gaps.

### **Multiple Applications**

Use it on interior walls, exterior walls, ceilings and sub-terrain applications.

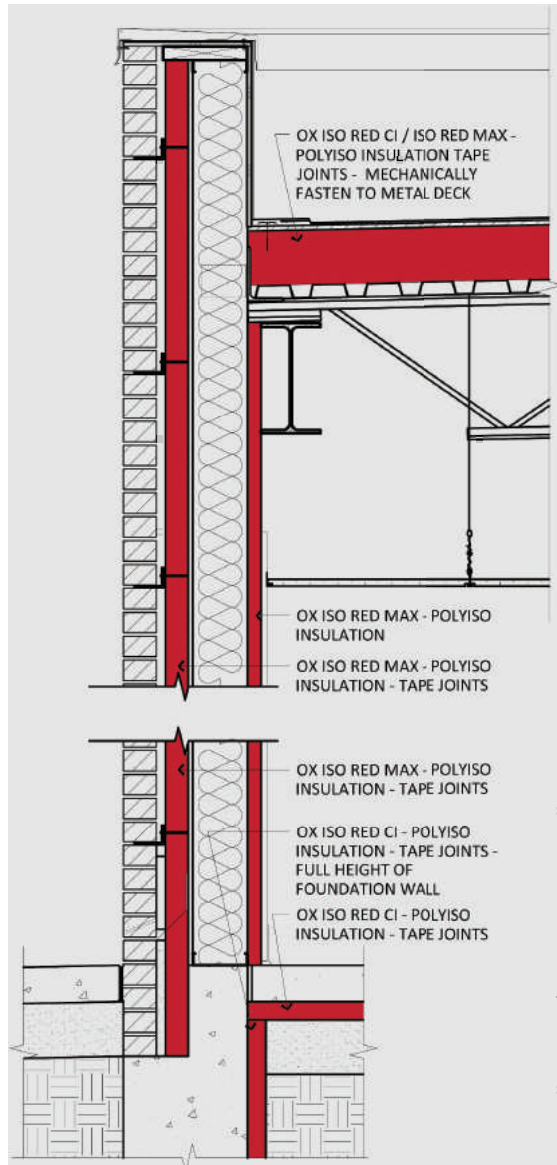
### **Easy to Install**

Light panels go up fast, saving time and money.

## Make your next job a commercial success

isoRed Max is our line of rigid polyiso insulation with multiple facer options that adds thermal insulation to commercial curtain walls or other E84 Class A polyiso applications. Use IsoRed Max for exterior walls, interior walls and ceilings to achieve best-in-class R-values and a weather resistant barrier. It's good for building owners. It's good for the planet. And the easy installation is good for you.

### Typical Application



### Attributes

- High R-values, as much as R-6.5 per inch. Thicknesses up to 4 inches, and lengths to 30' (dependent on thickness.)
- Vapor barrier performance with closed cell foam structure to stop vapor drive for any climate.
- Fiberglass reinforced foam core for durability on the jobsite and beyond.
- Optional embossed WHITE thermoset finished aluminum front facer for light reflectance, aesthetics, and durability.
- ASTM E84 Class A

### Product sizes

Standard width  
48"

Standard lengths  
8', 9', 10'

Custom lengths available



# OX ISO RED MAX Specifications

## Physical Properties of ISO RED MAX Polyiso Sheathings

ASTM Method	D1621	C209	E96 <sup>(1)</sup>	D2126	D2126		E84 <sup>(2)</sup>	
	Minimum Comprehensive Strength, PSI	Water Absorption	Water Vapor Transmission, perms	Dimensional Stability % Change	Nominal Density, pcf	Service Temperature Range, F	Flame Spread	Smoke Developed
ISO RED MAX Type 1, Class 2	25	<0.06	<0.03	<0.2	2.0	-50 to +250	≤ 25	≤ 450

(1) -40 and 200 degrees F, ambient RH, length & width (2) Fire Performance/Surface Burn Characteristics (3) Proprietary polyiso rigid board facers on both sides

## Thermal R-Values <sup>(1)</sup>

Thickness	0.50	0.75	1.00	1.55	2.00	2.5	3.0	3.5	4.0
Thermal R-Value	3.3	5.0	6.5	10.0	13.0	16.0	19.0	22.1	25.2
System R-Value <sup>(2)</sup>	6.1	7.8	9.3	13.6	15.8	18.8	21.8	25.3	28.0

(1) Thermal values are determined by using ASTM C518 test method at 75 degrees mean temperature.

System R-value refers to additional effective R-value possible due to emissivity performance of reflective surface.

According to ASHRAE, the reflective foil facing of ISO RED MAX and ISO RED CI qualifies to add R-value to a properly detailed assembly, which includes an adjacent, 3/4" dead air space.

## Fastener Methods

Application	Stud Spacing	Attachment Method	Fastener Spacing (1)
Wood Framing	16" or 24"	Capped nails, staples or roofing nails (~1" framing embedment)	12" perimeter 12" field Fastener heads flush with surface
Metal framing	16" or 24"	Corrosion-resistant self-tapping screws with 1" diameter cap or washer. (1/4" framing embedment)	12" perimeter 12" field Fastener heads flush with surface
Interior Masonry or concrete	N/A	Suitable construction adhesive or masonry fasteners with 1" diameter cap or washer or combination of adhesive & mechanical fasteners. (~1" embedment into substrate)	Adhesive beads spaced 16" horizontally or full perimeter. Mechanical fasteners 12" perimeter and 12" field spaced 16" horizontally or combination of adhesive and minimum fasteners to hold until adhesive sets
Exterior Masonry or concrete below grade	N/A	Granular water-draining fill	Only as required to ensure intimate contact to masonry surface or water proofed surface

1) Refer to project engineer for potential fastener spacing variation



**OX Engineered Products**  
 22260 Haggerty Road Suite 365  
 Northville, MI 48167  
 p. 1.800.345.8881  
 f. 248.289.9955  
 oxep.com

### Poly ISO Grades & Available Facers

Grade	Front Facer	Back Facer	Seam Finish Options
ISO RED MAX	0.9 mil foil	0.9 mil foil	Venture (1520 CW) aluminum
ISO RED MAX WF	1.25 mil white embossed	0.9 mil silver	Venture (1558 HT) White Vinyl trim enclosures
ISO RED MAX LD	1.25 mil white embossed	1.25 mil silver embossed	Venture (1558 HT) White Vinyl trim enclosures
ISO RED MAX HD	3.4 mil white embossed	1.25 mil silver embossed	Venture (1558 HT) White Vinyl trim enclosures

For water-resistive barrier installations, tape all seams with minimum 2 1/2" wide sheathing tape Venture (1520 CW) aluminum or equivalent. 4" wide self-adhered flashing tape meeting AAMA 711 with release liner may be required for effectively taping of inside and outside corners.

Flash all openings and penetrations with self-adhered flashing tape meeting AAMA 711 (3M™ 8067 All Weather Flashing Tape or equivalent). For installation instructions see:  
<http://www.drjbestpractices.org/installation-guide/2015/jun/installation-instructions-windows-over-fpis>

### Storage

Normal care should be taken to avoid excessive moisture exposure (soaking) to unpackaged product. Maintain packaging protection until installation. Once removed from the protective bundle covering and installed on the wall frame, ISO RED can remain installed exposed to elements.

Notice: Customer is responsible for complying with all applicable laws, regulations, and building codes (collectively, "Laws") of the location where any products (individually, "Product" and collectively, "Products") manufactured by Ox Engineered Products, LLC ("Ox") are actually used, specially including, but not limited to, Laws regarding use and disposal of the Products by Customer. Ox expressly disclaims all liability for the Products other than as expressly provided in the applicable warranty for the Product (the "Product Warranty") which is available from Ox at the address below. OX EXPRESSLY DISCLAIMS ANY OTHER WARRANTY EXPRESS OR IMPLIED INCLUDING SPECIFICALLY, BUT NOT LIMITED TO, ANY WARRANTY OF MERCHANTABILITY OR FITNESS FOR A PARTICULAR PURPOSE. None of the information contained in this brochure shall act as a waiver of any patent, trademark, copyright or other intellectual property right of Ox, nor shall any such information expand any rights or remedies set forth in the applicable Product Warranty. Ox shall not be liable for compliance of the Products with any test results obtained by third parties that may be included in this brochure. Actual results may vary. Not all Products are approved for use in all jurisdictions. The Products are not load bearing. Do not attempt to walk on them. Some Ox Products areammable. Ox disclaims liability for damages caused by incineration of the Products. By purchasing the Products, Customer irrevocably consents that any dispute arising between Ox and Customer will be determined under Michigan law without consideration of any conflicts of law analysis and that any such dispute shall be brought only in the state or federal courts serving the locality in which Ox's headquarters are then located. By purchasing the Products, Customer expressly consents to the exercise by such courts of personal and subject matter jurisdiction and venue for such purposes. Ox Engineered Products offices are located at 22260 Haggerty Road, Suite 365, Northville, Michigan 48167. Phone (800) 345-8881.