



OX Engineered Products
22260 Haggerty Road Suite 365
Northville, MI 48167
p. 1.800.345.8881
f. 248.289.9955
oxep.com



OX-IS™
structural insulation by **OX**

Continuous structural insulation. We're continuously committed to it.

OX-IS™ is the all in one product that allows you to meet building code requirements for structural sheathing, continuous insulation, weather and air resistive barrier performance.

Now with a 30 year limited system warranty*

Made in USA 

Structural Support

Structural lateral bracing and traverse wind load resistance.

Water Barrier

Code-approved water resistive barrier.

Air Barrier

Best-in-class air barrier performance.

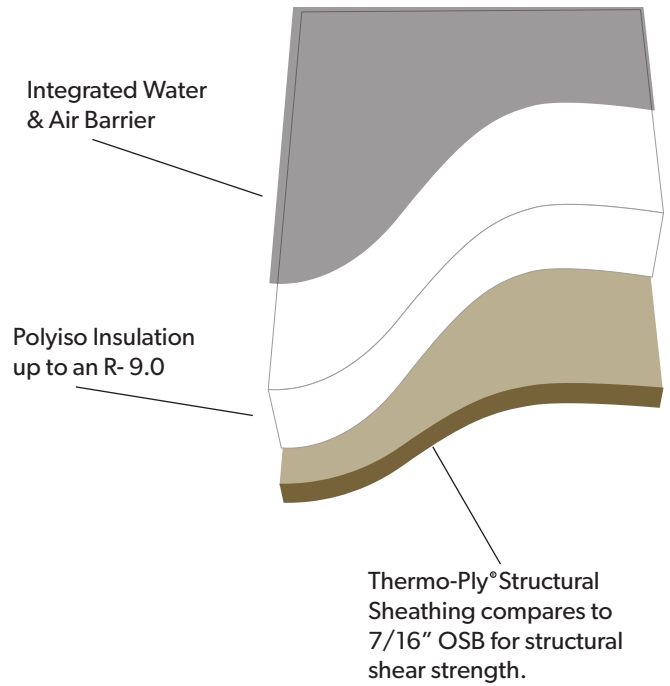
Insulation

Best-in-class R-value per inch.

*Visit www.oxep.com for full warranty details

4-in-1 sheathing that's second to none.

OX-IS™ insulated sheathing starts with a non-reflective resilient exterior facer that provides water resistance and high durability. The closed-cell, moisture-resistant polyisocyanurate foam core provides high compressive strength, a long-term R-value and a continuous air barrier. And a thin, high-pressure laminated member provides even more structural support. Put it all together and you get the highest possible performance from your structural sheathing.



Physical Properties of OX-IS (foam properties) Complies with ASTM C1289, Type 1, Class 1

ASTM Method	D1621	C203	C209	E96	D2126 ⁽¹⁾			E84 ⁽²⁾	
	Minimum Compressed Strength, PSI	Flexible Strength, PSI	Water Absorption	Water Vapor Transmission, perms	Dimensional Stability % Change	Nominal Density, pcf	Service Temperature Range, F	Flame Spread	Smoke Developed
OX-IS	25	40	<0.06	<0.3	<0.4	2.0	-50 to +190	≤ 75	≤ 450

(1) -40 and 200 degrees F, ambient RH, length & width

For more detail refer to technical evaluation reports on our website: www.oxep.com

Thermal R-Values ⁽¹⁾ | "R" means resistance to heat flow. The higher the R-value, the greater the insulating value.

Thickness (nom.), in	Thermal R-Value
0.50	3.0
0.50 HS	3.0
0.92	5.0
1.00	6.0
1.70	10

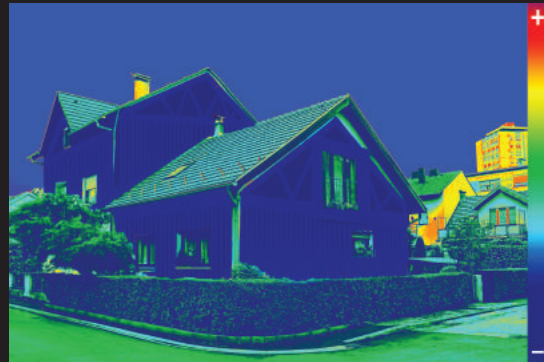
(1) Thermal values are determined by using ASTM c518 test method at 75 degrees mean temperature.
Sizes width and length: 4'x8', 4'x9', 4'x10'

**THERMAL IMAGE OF A STRUCTURE
BUILT WITHOUT INSULATED
SHEATHING**



Without continuous insulation, heat loss through framing (thermal bridging) is significant.

**THERMAL IMAGE OF THE SAME
STRUCTURE BUILT WITH 1/2" (R-3)
OF CONTINUOUS INSULATION**



1/2" of continuous insulation greatly reduces heat loss through wall framing and improves on cavity performance.





OX Engineered Products
22260 Haggerty Road Suite 365
Northville, MI 48167
p. 1.800.345.8881
f. 248.289.9955
oxep.com

Installation Instructions

Orientation of Panels

- Orient panels so that the product print faces outward
- For structural use, all panel edges/seams must be fastened and backed by framing
- For non-structural uses, all edges do not need to be backed
- Cut panels with standard circular saw

Orientation of Panels (Combined w/ Std. foam sheathing)

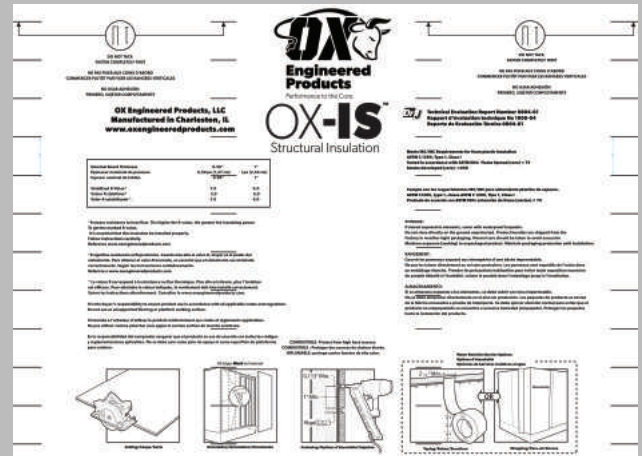
- Use OX-IS™ Structural Insulation in areas where bracing is required
- Supplement remaining wall with nonstructural foam sheathing such as OX ISO RED CI™ Polyiso Foam Sheathing

Fastening

- For structural applications fasten OX-IS™ every 3" around perimeter and 3" in the field of the board. For non-structural applications fasten OX-IS™ every 3" around the perimeter and 6" in the field of the board. Minimum embedment of 1" into framing. Counter sinking into foam is acceptable:
7/16" to 1" crown, 16 gauge staple
0.113" (min) diameter nail (roofing nail)
- For metal studs: No. 8-18 × 1-1/4 Phillips modified truss head self-drilling screws

Taping

- Center the tape over the joints/seams
- When taping joints, use shingle fashion technique
- Install tape per manufacturer's instructions on clean/dry surface
- Best practice for interior and exterior corners is to use flashing tapes to fully cover the joints/seams.
- Building wrap is not required to meet WRB requirements if all joints are taped
- Approved tapes include Arctic Flash™ Synthetic Flashing and a minimum 2.5" OX™ seam tape.



To review the full installation instructions visit: www.oxep.com

Notice: Customer is responsible for complying with all applicable laws, regulations, and building codes (collectively, "Laws") of the location where any products (individually, "Product" and collectively, "Products") manufactured by Ox Engineered Products, LLC ("Ox") are actually used, specifically including, but not limited to, Laws regarding use and disposal of the Products by Customer. Ox expressly disclaims all liability for the Products other than as expressly provided in the applicable warranty for the Product (the "Product Warranty") which is available from Ox at the address below. OX EXPRESSLY DISCLAIMS ANY OTHER WARRANTY EXPRESS OR IMPLIED INCLUDING SPECIFICALLY, BUT NOT LIMITED TO, ANY WARRANTY OF MERCHANTABILITY OR FITNESS FOR A PARTICULAR PURPOSE. None of the information contained in this brochure shall act as a waiver of any patent, trademark, copyright or other intellectual property right of Ox, nor shall any such information expand any rights or remedies set forth in the applicable Product Warranty. Ox shall not be liable for compliance of the Products with any test results obtained by third parties that may be included in this brochure. Actual results may vary. Not all Products are approved for use in all jurisdictions. The Products are not load bearing. Do not attempt to walk on them. Some Ox Products are amenable. Ox disclaims liability for damages caused by incineration of the Products. By purchasing the Products, Customer irrevocably consents that any dispute arising between Ox and Customer will be determined under Michigan law without consideration of any conflicts of law analysis and that any such dispute shall be brought only in the state or federal courts serving the locality in which Ox's headquarters are then located. By purchasing the Products, Customer expressly consents to the exercise by such courts of personal and subject matter jurisdiction and venue for such purposes. Ox Engineered Products offices are located at 22260 Haggerty Road, Suite 365, Northville, Michigan 48167. Phone (800) 345-8881.