



**OX Engineered Products**  
22260 Haggerty Road Suit 365  
Northville, MI 48167  
p. 248.289.9950  
f. 248.289.9955  
oxengineeredproducts.com



# ISO **RED MAX**<sup>®</sup> **WF**

polyiso sheathing by **OX**<sup>®</sup>

ISO RED MAX WF provides a continuous interior thermal and vapor barrier with significant R-values for a variety of exterior wall materials including concrete and masonry.

---

### **Multi-functional**

Use it on walls or ceilings for thermal and architectural applications.

### **One-Step Install**

Install ISO RED MAX WF and there's no need for drywall or other finishes.

### **Easy to Maintain**

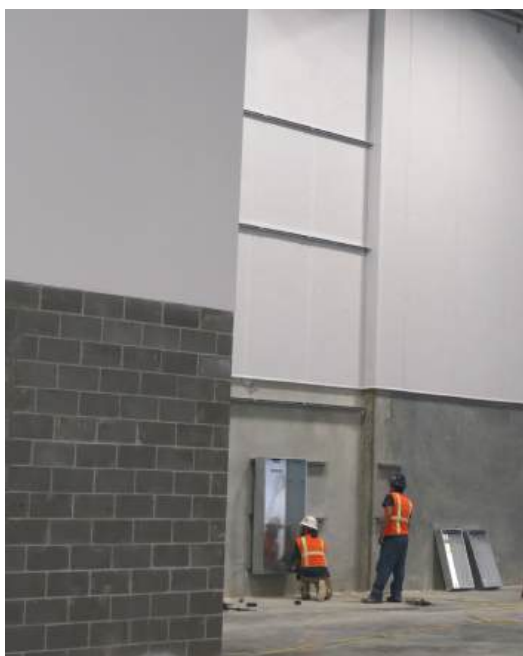
The high-quality finish cleans easily with a cloth or light power wash.

# You'll never be finished finding uses for it.

ISO RED MAX WF is an incredibly versatile rigid polyiso insulator, serving as a thermal and vapor barrier for concrete and masonry walls in commercial buildings and residential spaces like basements and garages. It's insulation that doubles as a cost effective, easy-to-maintain surface that meets code without additional wall board, saving you time during the installation process.

## Features

- High R-Values, as much as R-6.5 per inch.
- Vapor barrier performance in any climate with closed cell foam structure.
- Fiberglass reinforced foam core for durability before, during and after the job.
- Embossed white thermoset finished aluminum front facer for light reflection, aesthetics and durability.
- Thickness up to 4" and lengths up to 30'



## OX ISO RED MAX Specifications

### OX IS RED MAX WF/LD/HD Specifications

ASTM Method	D1621	C203	C209	E96	D2126 <sup>(1)</sup>	E84 <sup>(2)</sup>			
	Minimum Comprehensive Strength, PSI	Flexible Strength, PSI	Water Absorption	Water Vapor Transmission, perms	Dimensional Stability % Change	Nominal Density, pcf	Service Temperature Range, F	Flame Spread	Smoke Deployed
ISO RED MAX Type 1, Class 2	25	40	<0.06	<0.3	<0.2	2.0	-50 to +250	≤ 25	≤ 450

### Thermal R-Values <sup>(1)</sup> | "R" means resistance to heat flow. The higher the R-value, the greater the insulating value.

Thickness (nom.), in	0.50	0.75	1.00	1.50	1.55	1.75	2.00	2.5	3.0	3.5	4.0
Thermal R-Value	3.3	5.0	6.5	9.75	10.0	11.5	13.0	16.0	19.0	22.1	25.2

### Poly ISO Grades & Available Facers

Grade	Front Facer	Back Facer	Seam Finish Options
ISO RED MAX WF	1.25 mil white embossed	0.9 mil foil	ISO RED MAX WF Seam Tape
ISO RED MAX LD	1.25 mil white embossed	1.25 mil embossed	ISO RED MAX WF Seam Tape
ISO RED MAX HD	3.4 mil white embossed	1.25 mil embossed	ISO RED MAX WF Seam Tape



**OX Engineered Products**  
22260 Haggerty Road Suit 365  
Northville, MI 48167  
p. 248.289.9950  
f. 248.289.9955  
oxengineeredproducts.com

## **OX ISO RED MAX WF/LD/HD Installation**

1. Store ISO RED MAX WF/LD/HD inside or protected from precipitation and standing water.
2. Measure and cut boards with knife or saw. Be careful to not mar white surface in cutting step.  
No allowance for expansion or contraction of the ISO RED MAX WF/LD/HD is necessary.
3. If applicable, install starting PVC trim pieces to walls per manufacturer's instructions.
4. Place 3/8" bead of construction adhesive at perimeter of boards and every 5' horizontally.  
If PVC trim pieces are used, place 3/8" bead of adhesive to inside of PVC trim top flange.  
Also place a bead of adhesive at top edge of board. (Sikaflex-201, DC 790, Vulkem 116, Liquid Nails Heavy Duty or equivalent).
5. Employ mechanical anchorage with washer heads to supplement adhesives.  
Space anchors every 5' horizontally. Tape or finish over exposed anchor heads as desired.
6. Finish edges and seams with white tape or PVC trim pieces (below).
7. **CLEANING:** Can be pressure washed up to 1000 psi from a distance of at least 3 feet with a 15-degree or greater spray tip.



### **Joins/Edges Tape**

Ox Commercial Seam Tape or  
ISO Red Max WF Seam Tape

### **PVC Trim Pieces**

Victory Bear Flex-Tite or Quick-Clip  
PVC Trim Pieces  
[www.victorybear.com](http://www.victorybear.com)

Notice: Customer is responsible for complying with all applicable laws, regulations, and building codes (collectively, "Laws") of the location where any products (individually, "Product" and collectively, "Products") manufactured by Ox Engineered Products, LLC ("Ox") are actually used, specially including, but not limited to, Laws regarding use and disposal of the Products by Customer. Ox expressly disclaims all liability for the Products other than as expressly provided in the applicable warranty for the Product (the "Product Warranty") which is available from Ox at the address below. OX EXPRESSLY DISCLAIMS ANY OTHER WARRANTY EXPRESS OR IMPLIED INCLUDING SPECIFICALLY, BUT NOT LIMITED TO, ANY WARRANTY OF MERCHANTABILITY OR FITNESS FOR A PARTICULAR PURPOSE. None of the information contained in this brochure shall act as a waiver of any patent, trademark, copyright or other intellectual property right of Ox, nor shall any such information expand any rights or remedies set forth in the applicable Product Warranty. Ox shall not be liable for compliance of the Products with any test results obtained by third parties that may be included in this brochure. Actual results may vary. Not all Products are approved for use in all jurisdictions. The Products are not load bearing. Do not attempt to walk on them. Some Ox Products are amenable. Ox disclaims liability for damages caused by incineration of the Products. By purchasing the Products, Customer irrevocably consents that any dispute arising between Ox and Customer will be determined under Michigan law without consideration of any conflicts of law analysis and that any such dispute shall be brought only in the state or federal courts serving the locality in which Ox's headquarters are then located. By purchasing the Products, Customer expressly consents to the exercise by such courts of personal and subject matter jurisdiction and venue for such purposes. Ox Engineered Products offices are located at 22260 Haggerty Road, Suite 365, Northville, Michigan 48167. Phone (800) 345-8881.