



OX Engineered Products
22260 Haggerty Road Suite 365
Northville, MI 48167
p. 1.800.345.8881
f. 248.289.9955
oxep.com



iso**REDMAX**[®]

Take your energy efficiency to the max.

IsoRed Max is our line of rigid polyiso insulation with multiple facer options that adds thermal insulation to commercial curtain walls or other E84 Class A polyiso applications.

Made in USA 

iso**REDMAX**
HD
polyiso sheathing by **OX**

iso**REDMAX**
LD
polyiso sheathing by **OX**

iso**REDMAX**
GF
polyiso sheathing by **OX**

iso**REDMAX**
WF
polyiso sheathing by **OX**

Energy Efficiency

Easily add R-value and eliminate insulation gaps.

Multiple Applications

Use it on interior walls, exterior walls, ceilings and sub-terrain applications.

Easy to Install

Light panels go up fast, saving time and money.

OX ISO RED MAX Specifications

| Physical Properties of ISO RED MAX Polyiso Sheathings | | | | | | | | |
|---|-------------------------------------|------------------|---------------------------------|--------------------------------|----------------------|------------------------------|--------------------|-----------------|
| ASTM Method | D1621 | C209 | E96 ⁽¹⁾ | D2126 | D2126 | | E84 ⁽²⁾ | |
| | Minimum Comprehensive Strength, PSI | Water Absorption | Water Vapor Transmission, perms | Dimensional Stability % Change | Nominal Density, pcf | Service Temperature Range, F | Flame Spread | Smoke Developed |
| ISO RED MAX Type 1, Class 2 | 25 | <0.06 | <0.03 | <0.2 | 2.0 | -50 to +250 | ≤ 25 | ≤ 450 |

(1) -40 and 200 degrees F, ambient RH, length & width (2) Fire Performance/Surface Burn Characteristics (3) Proprietary polyiso rigid board facers on both sides

| Thermal R-Values ⁽¹⁾ | | | | | | | | | | | | |
|---------------------------------|------|------|------|------|------|------|------|------|------|------|------|------|
| Thickness | 0.50 | 0.75 | 1.00 | 1.25 | 1.55 | 1.75 | 2.00 | 2.5 | 2.75 | 3.0 | 3.5 | 4.0 |
| Thermal R-Value | 3.3 | 5.0 | 6.5 | 8.0 | 10.0 | 11.3 | 13.0 | 16.0 | 17.7 | 19.0 | 22.1 | 25.2 |
| System R-Value ⁽²⁾ | 6.1 | 7.8 | 9.3 | 12.5 | 13.6 | 14.3 | 15.8 | 18.8 | 20.5 | 21.8 | 25.3 | 28.0 |

(1) Thermal values are determined by using ASTM C518 test method at 75 degrees mean temperature.

System R-value refers to additional effective R-value possible due to emissivity performance of reflective surface.

According to ASHRAE, the reflective foil facing of ISO RED MAX and ISO RED CI qualifies to add R-value to a properly detailed assembly, which includes an adjacent, 3/4" dead air space.

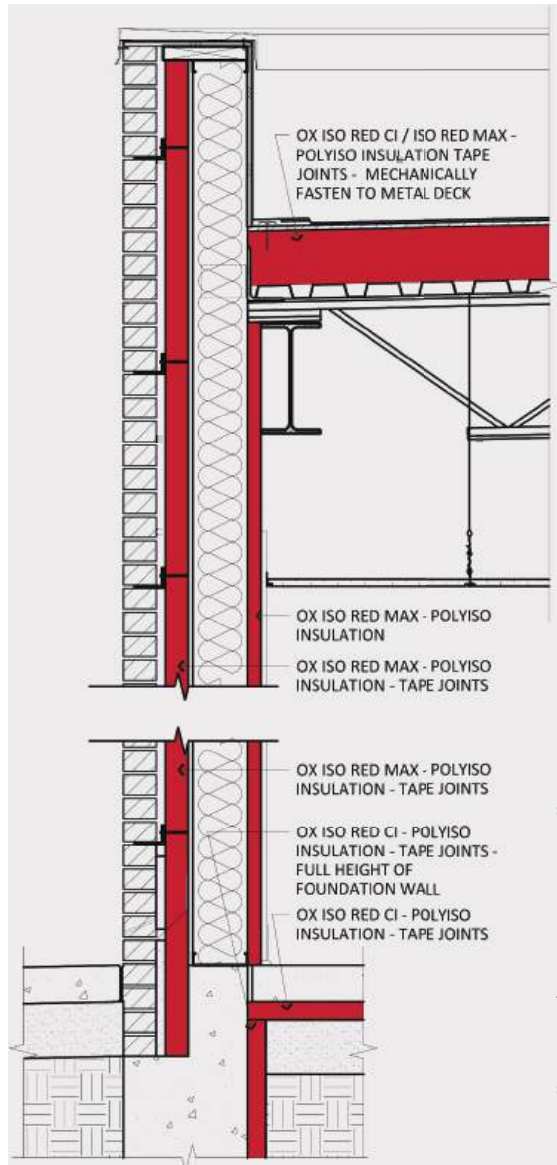
| Fastener Methods | | | |
|--|--------------|--|--|
| Application | Stud Spacing | Attachment Method | Fastener Spacing (1) |
| Wood Framing | 16" or 24" | Capped nails, staples or roofing nails (~1" framing embedment) | 12" perimeter 12" field Fastener heads flush with surface |
| Metal framing | 16" or 24" | Corrosion-resistant self-tapping screws with 1" diameter cap or washer. (1/4" framing embedment) | 12" perimeter 12" field Fastener heads flush with surface |
| Interior Masonry or concrete | N/A | Suitable construction adhesive or masonry fasteners with 1" diameter cap or washer or combination of adhesive & mechanical fasteners. (~1" embedment into substrate) | Adhesive beads spaced 16" horizontally or full perimeter. Mechanical fasteners 12" perimeter and 12" field spaced 16" horizontally or combination of adhesive and minimum fasteners to hold until adhesive sets |
| Exterior Masonry or concrete below grade | N/A | Granular water-draining fill | Only as required to ensure intimate contact to masonry surface or water proofed surface |

1) Refer to project engineer for potential fastener spacing variation

Make your next job a commercial success

isoRed Max is our line of rigid polyiso insulation with multiple facer options that adds thermal insulation to commercial curtain walls or other E84 Class A polyiso applications. Use IsoRed Max for exterior walls, interior walls and ceilings to achieve best-in-class R-values and a weather resistant barrier. It's good for building owners. It's good for the planet. And the easy installation is good for you.

Typical Application



Attributes

- High R-values, as much as R-6.5 per inch. Thicknesses up to 4 inches, and lengths to 30' (dependent on thickness.)
- Vapor barrier performance with closed cell foam structure to stop vapor drive for any climate.
- Fiberglass reinforced foam core for durability on the jobsite and beyond.
- Optional embossed WHITE thermoset finished aluminum front facer for light reflectance, aesthetics, and durability.
- ASTM E84 Class A

Product sizes

Standard width
48"

Standard lengths
8', 9', 10'

Custom lengths available



Poly ISO Grades & Available Facers

| Grade | Front Facer | Back Facer | Seam Finish Options |
|----------------|-------------------------|--------------------------|--------------------------|
| ISO RED MAX | 0.9 mil foil | 0.9 mil foil | Ox Commercial Seam Tape |
| ISO RED MAX WF | 1.25 mil white embossed | 0.9 mil silver | ISO RED MAX WF Seam Tape |
| ISO RED MAX LD | 1.25 mil white embossed | 1.25 mil silver embossed | ISO RED MAX WF Seam Tape |
| ISO RED MAX HD | 3.4 mil white embossed | 1.25 mil silver embossed | ISO RED MAX WF Seam Tape |
| ISO RED MAX GF | 1.25 mil grey embossed | 0.9 mil silver | ISO RED MAX GF Seam Tape |

Joins/Edges Tape

Ox Commercial Seam Tape or
ISO Red Max WF Seam Tape

For water-resistive barrier installations, tape all seams with minimum 2 7/8" wide sheathing tape (Ox Commercial Seam Tape) or equivalent. 4" wide self-adhered flashing tape (Ox Butyl Flashing) meeting AAMA 711 with release liner required for effectively taping of inside and outside corners to comply with manufacturers warranty.

Flash all openings and penetrations with self-adhered flashing tape meeting AAMA 711 (Ox Butyl Flashing).

For installation instructions see:

<http://www.drjbestpractices.org/installation-guide/2015/jun/installation-instructions-windows-over-fpis>

Storage

Normal care should be taken to avoid excessive moisture exposure (soaking) to unpackaged product. Maintain packaging protection until installation. Once removed from the protective bundle covering and installed on the wall frame, ISO RED can remain installed exposed to elements.

OX ISO RED MAX Installation

1. Store ISO RED MAX inside or protected from precipitation and standing water.
2. Measure and cut boards with knife or saw. Be careful to not mar white surface in cutting step.
No allowance for expansion or contraction of the ISO RED MAX is necessary.
3. If applicable, install starting PVC trim pieces to walls per manufacturer's instructions.
4. Place 3/8" bead of construction adhesive at perimeter of boards and every 5' horizontally.
If PVC trim pieces are used, place 3/8" bead of adhesive to inside of PVC trim top flange.
Also place a bead of adhesive at top edge of board. (Sikaflex-201, DC 790, Vulkem 116, Liquid Nails Heavy Duty or equivalent).
5. Employ mechanical anchorage with washer heads to supplement adhesives.
Space anchors every 5' horizontally. Tape or finish over exposed anchor heads as desired.
6. Finish edges and seams with white tape or PVC trim pieces.
7. **CLEANING:** Can be pressure washed up to 1000 psi from a distance of at least 3 feet with a 15-degree or greater spray tip.

Notice: Customer is responsible for complying with all applicable laws, regulations, and building codes (collectively, "Laws") of the location where any products (individually, "Product" and collectively, "Products") manufactured by Ox Engineered Products, LLC ("Ox") are actually used, specially including, but not limited to, Laws regarding use and disposal of the Products by Customer. Ox expressly disclaims all liability for the Products other than as expressly provided in the applicable warranty for the Product (the "Product Warranty") which is available from Ox at the address below. OX EXPRESSLY DISCLAIMS ANY OTHER WARRANTY EXPRESS OR IMPLIED INCLUDING SPECIFICALLY, BUT NOT LIMITED TO, ANY WARRANTY OF MERCHANTABILITY OR FITNESS FOR A PARTICULAR PURPOSE. None of the information contained in this brochure shall act as a waiver of any patent, trademark, copyright or other intellectual property right of Ox, nor shall any such information expand any rights or remedies set forth in the applicable Product Warranty. Ox shall not be liable for compliance of the Products with any test results obtained by third parties that may be included in this brochure. Actual results may vary. Not all Products are approved for use in all jurisdictions. The Products are not load bearing. Do not attempt to walk on them. Some Ox Products are amicable. Ox disclaims liability for damages caused by incineration of the Products. By purchasing the Products, Customer irrevocably consents that any dispute arising between Ox and Customer will be determined under Michigan law without consideration of any conflicts of law analysis and that any such dispute shall be brought only in the state or federal courts serving the locality in which Ox's headquarters are then located. By purchasing the Products, Customer expressly consents to the exercise by such courts of personal and subject matter jurisdiction and venue for such purposes. Ox Engineered Products offices are located at 22260 Haggerty Road, Suite 365, Northville, Michigan 48167. Phone (800) 345-8881.

